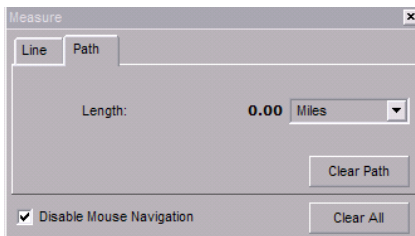




Google Earth MS Mapping

TEKS: 4.3B, 4.5A, 4.12A, 5.3A, 5.4A, 5.11A

1. Open Google Earth.
2. Locate the .kmz file for our Middle School on the student shared drive, open the .kmz file.
3. Complete the tasks on your recording sheet.
4. Click on Show Ruler. Use the Measure Path device to answer questions.



Tips for using the Measure / Path feature: Click on the screen when you want the path to turn onto another street. Be sure to stay on streets! Use the zoom in tool until you can see the streets. If you need to change the screen view, use the navigation arrows.



Zoom Slider

Student Recording Sheet

Name: _____

1. What is the shortest route you can find from our school to the middle school (staying on roads)? What would the route be if you could fly straight to the middle school?

Straight route:

Route on roads:

2. What is the distance (staying on roads) from the farthest elementary school in our cluster to the middle school? From the closest?

Farthest: _____ Distance: _____

Closest: _____ Distance: _____

3. If you had to deliver students from the middle school to all the elementary schools in our group, and then return to the middle school, what path would you take? In what order would you go to the schools? How long would the drive be in miles?

Name of School (Write names in!)	Distance to Next School (Path feature)
Middle School Name	
Elem. School Name	
Elem. School Name	
Elem. School Name	
Elem. School Name	
Elem. School Name	
Elem. School Name	
Middle School Name	
TOTAL DISTANCE DRIVEN:	
Total Distance Rounded to Nearest Whole Number:	

4. Create a Graph Club graph (choose two appropriate graphs) to display the distance from each elementary school to the Middle School. Use the straight line measurement, not the path.