

## Adding an Image to a Map in Google Earth

1. Open Google Earth
2. Add a placemark to your map by clicking on the placemark button and then dragging it to the position you want.
3. Give the placemark a name.
4. In the Description box copy and paste the following htm code:

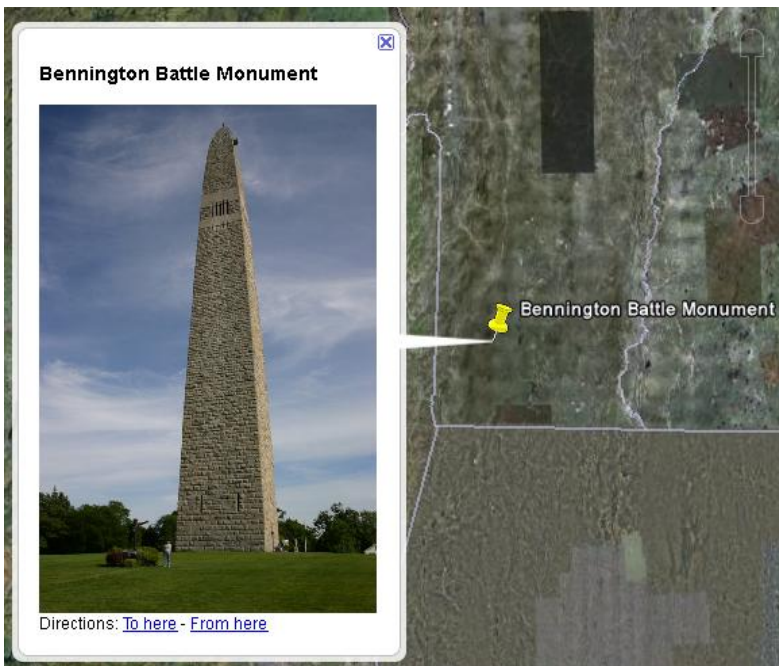
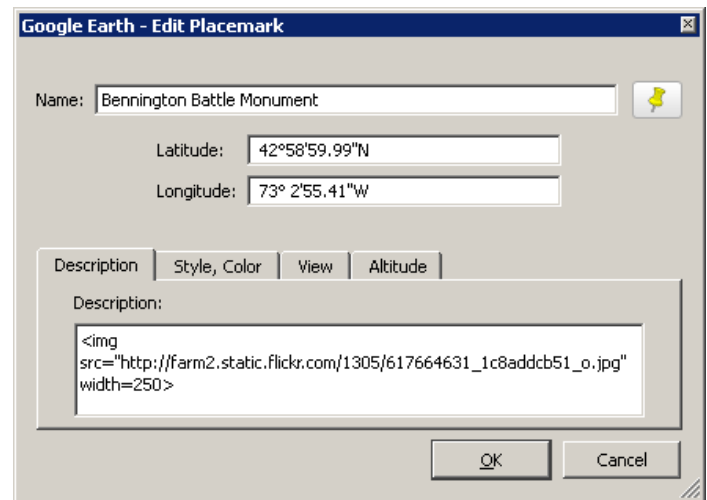
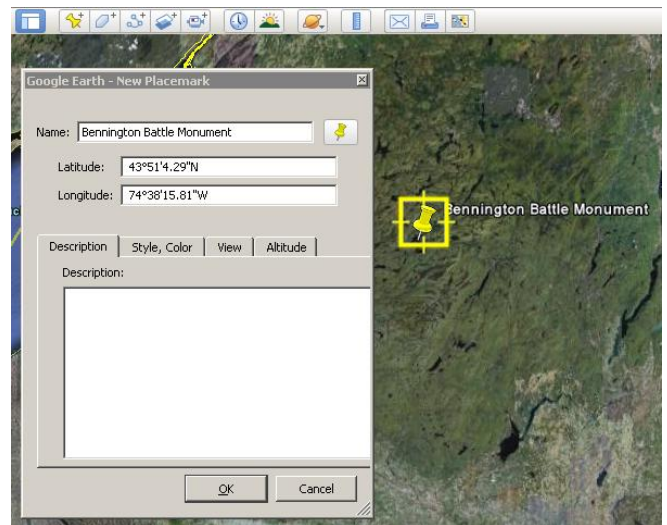
```

```

5. The section of the code highlighted in yellow can be replaced with the URL of any online photograph.
6. Replace it with the URL for this flickr Bennington Battle Monument photograph:

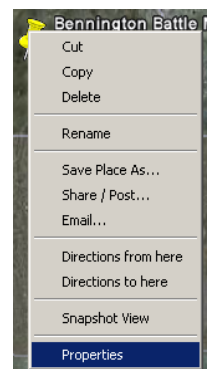
*[http://farm2.static.flickr.com/1305/617664631\\_1c8addcb51\\_o.jpg](http://farm2.static.flickr.com/1305/617664631_1c8addcb51_o.jpg)*

7. Click OK. When you click on the placemark you should see the photograph.
8. You can adjust the size of the photograph by changing the width dimension to a higher or lower number.



9. If you want add a picture or make an adjustment to a placemark and choose "Properties" and you will be back in the window you saw when you first made the placemark.

10. Copyright laws should be observed when using images



in a project like this. In addition to photographs you take yourself there are millions of Creative Commons licensed photographs available on the Flickr Web site.

<http://www.flickr.com/creativecommons/>